



# Labour Force

May 2016

# Editorial

---

- There is CONSIDERABLE disagreement on the veracity and appropriateness of the ABS Labour Force survey methodology amongst [some] analysts. [See 2.4.1]
- Wherever possible, I supply the TREND figures, and will provide quarterly and yearly updates to avoid monthly “sensationalism”.
- **Caution** with any *monthly* results is always advised.

Bill Coppinger



# May 2016: Labour Force Australia

---

- Australian unemployment rate **remained steady** at **5.7%**. [Trend]
- **Eleventh** consecutive month with *part-time employment* **increases** of more than 10,000 persons; and
- **Fourth** consecutive month with *full-time employment* **decreases** of more than 5,000 persons."
- “**Less full-time Jobs, Less hours**”: Monthly hours worked in all jobs **decreased by 2.3 million** hours (0.1 per cent) to 1,632.1 million hours. Hours worked have **decreased by 13.7 million hours** (0.8 per cent) over the last **6 months**, down from the high point at December 2015.
- Australian participation rate **decreased** by 0.1% to **64.8%**.
- Victorian unemployment rate **decreased** by 0.1% to **5.7%** [Trend]
- Victoria Trend employment growth strongest in Australia up 5,500 persons [2nd consecutive month]
- Australian Youth Unemployment 15-19 rate **remained** at **17.3%**
- Australian Youth Unemployment 15-24 rate **remained** at **12.2%** [4th consecutive month]
- Australian 15-24 Employment to Population Ratio remained **unchanged** at **58.9%** [Revised]

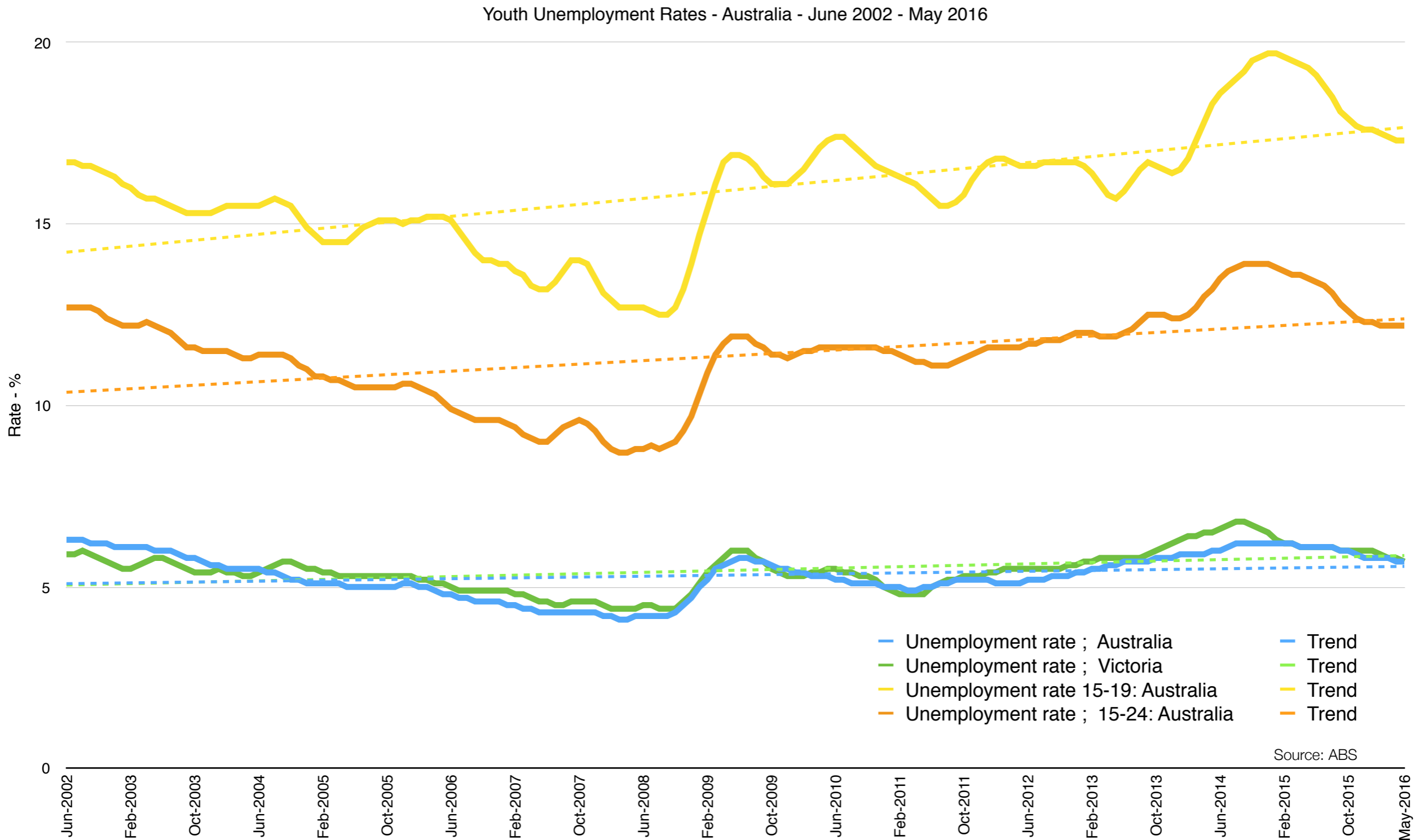
# Food-for-thought : Election 2016

---

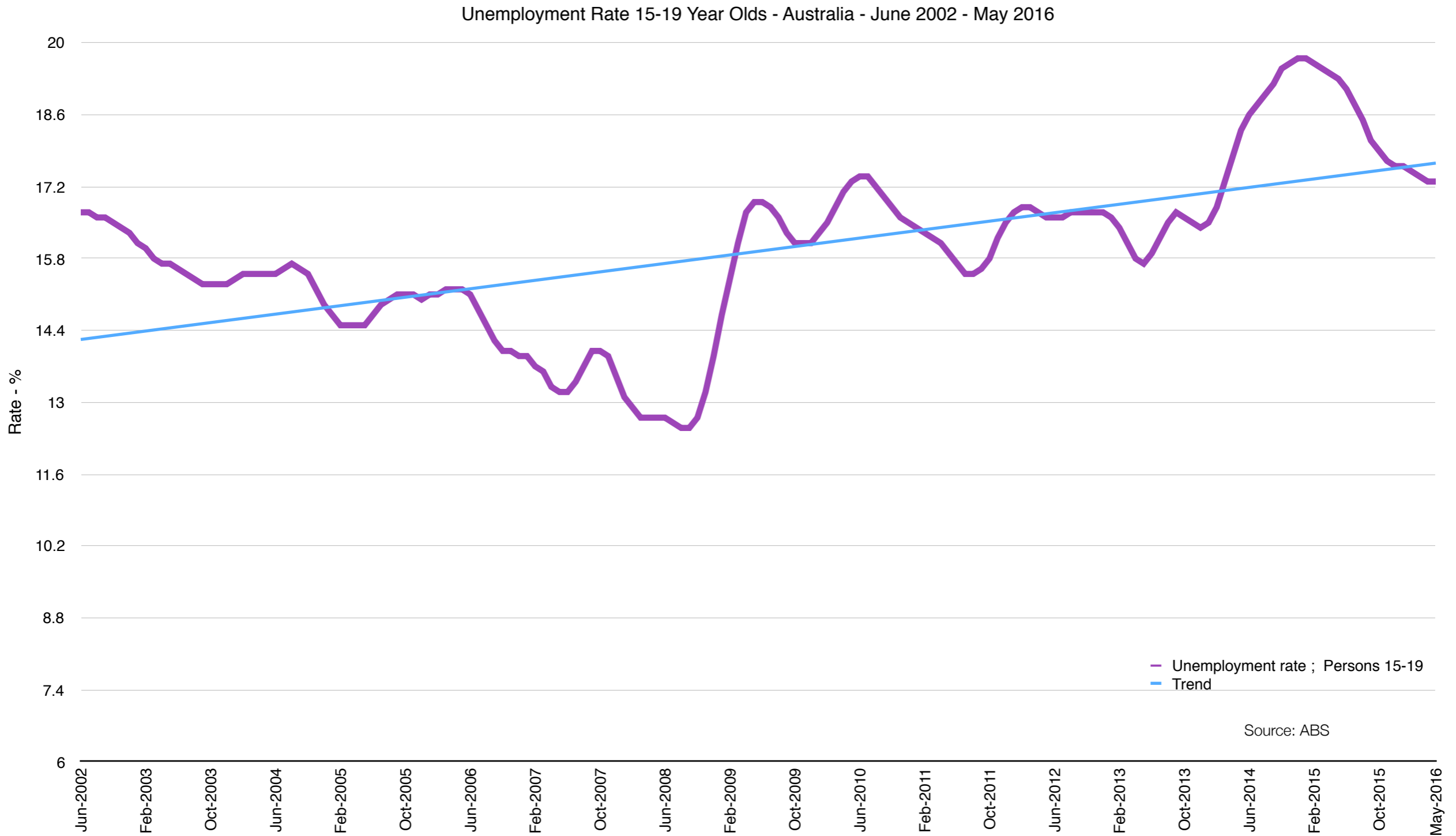
- In 1978 1.3 million 15-24 year olds worked FULL TIME
- In May 2016, this figure is 865,000 [33% Decrease]
- In 1978 524,000 15-19 year olds worked FULL TIME
- In May 2016, this figure is 156,000 [70% Decrease]

**Q:** Were will work preparation for under 25's occur in the future?

# Youth Unemployment Australia - May 2016

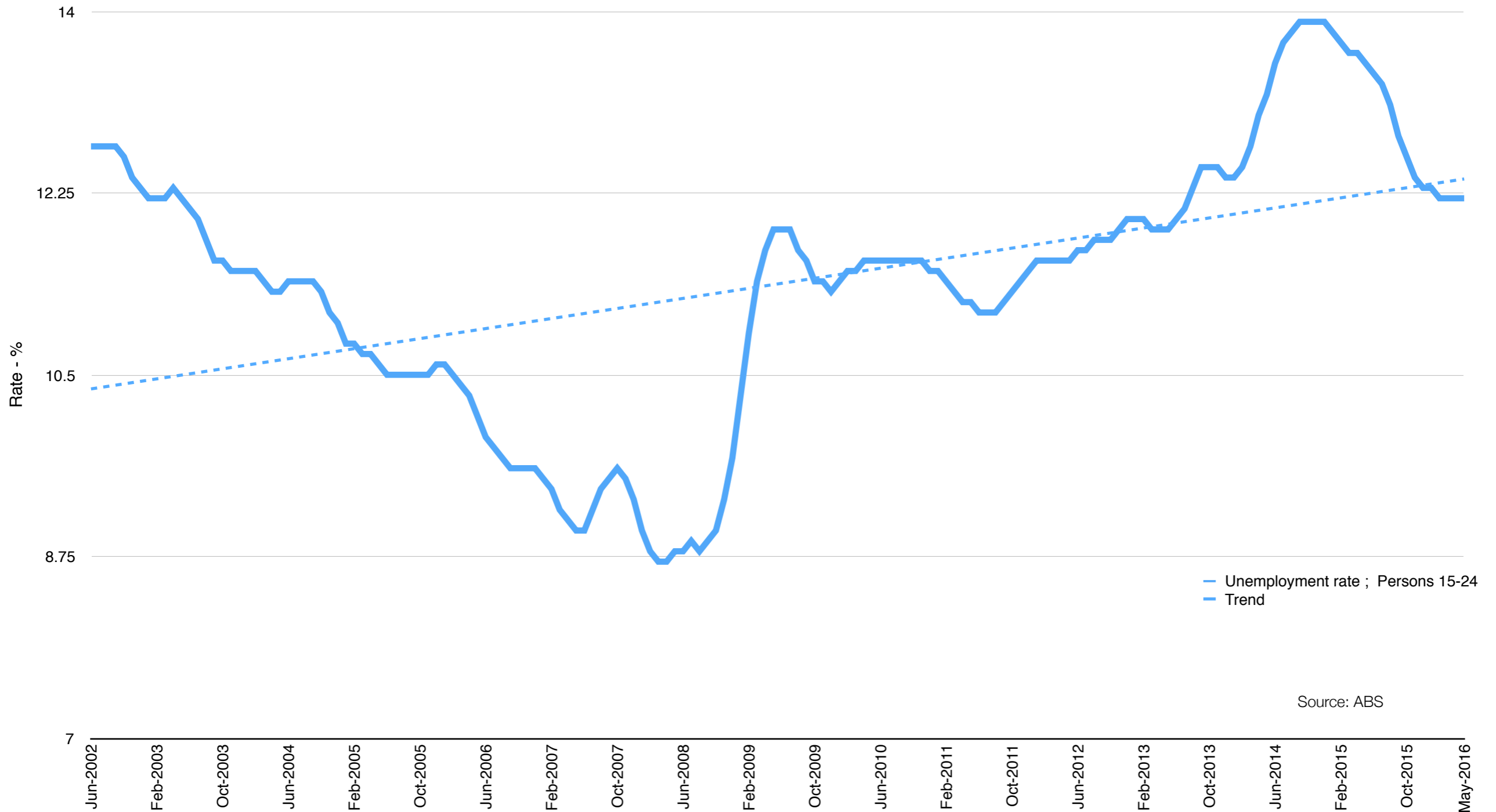


# Youth Unemployment 15-19 - Australia May 2016



# Youth Unemployment 15-24 - Australia May 2016

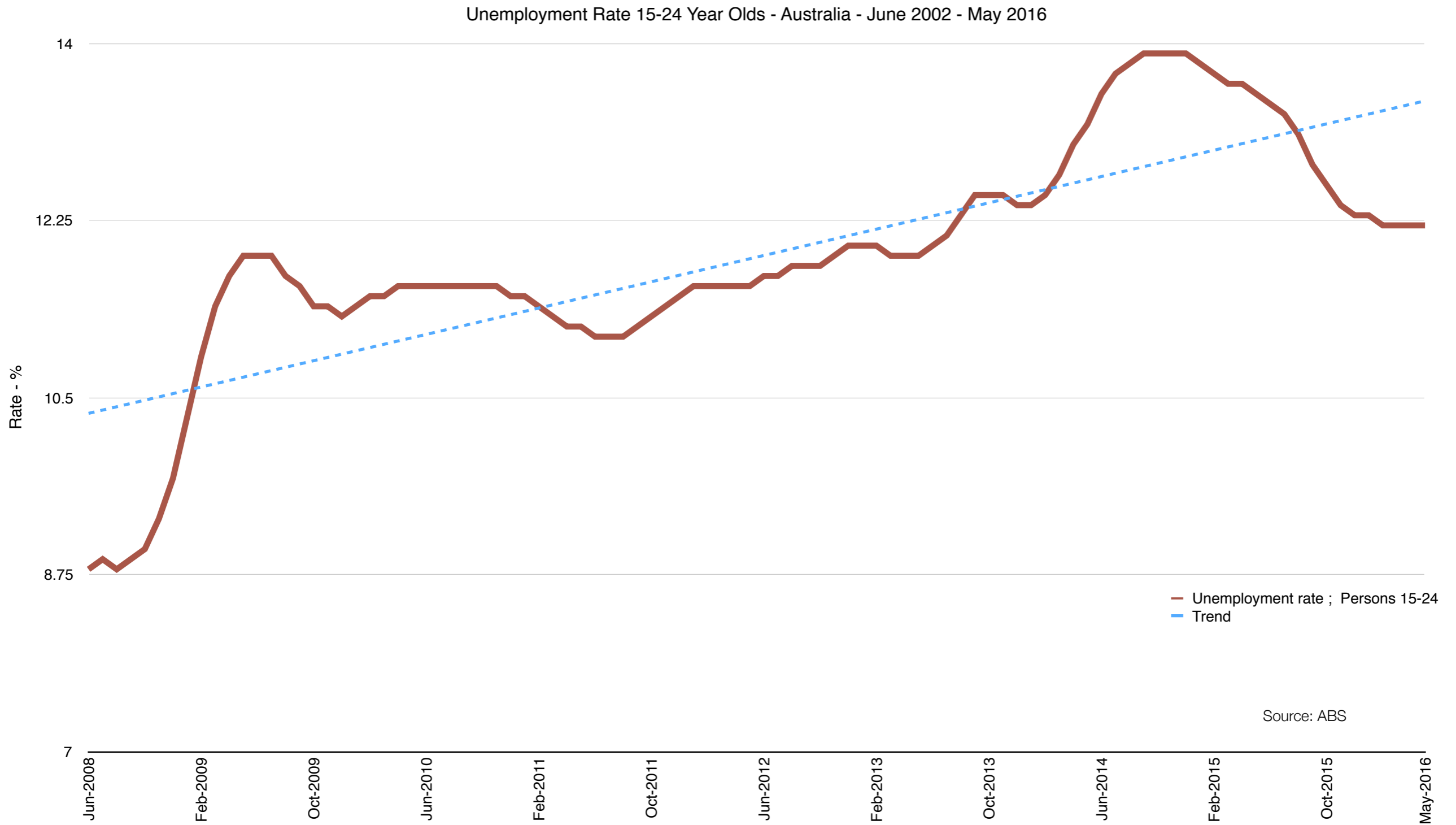
Unemployment Rate 15-24 Year Olds - Australia - June 2002 - May 2016



— Unemployment rate ; Persons 15-24  
- - - Trend

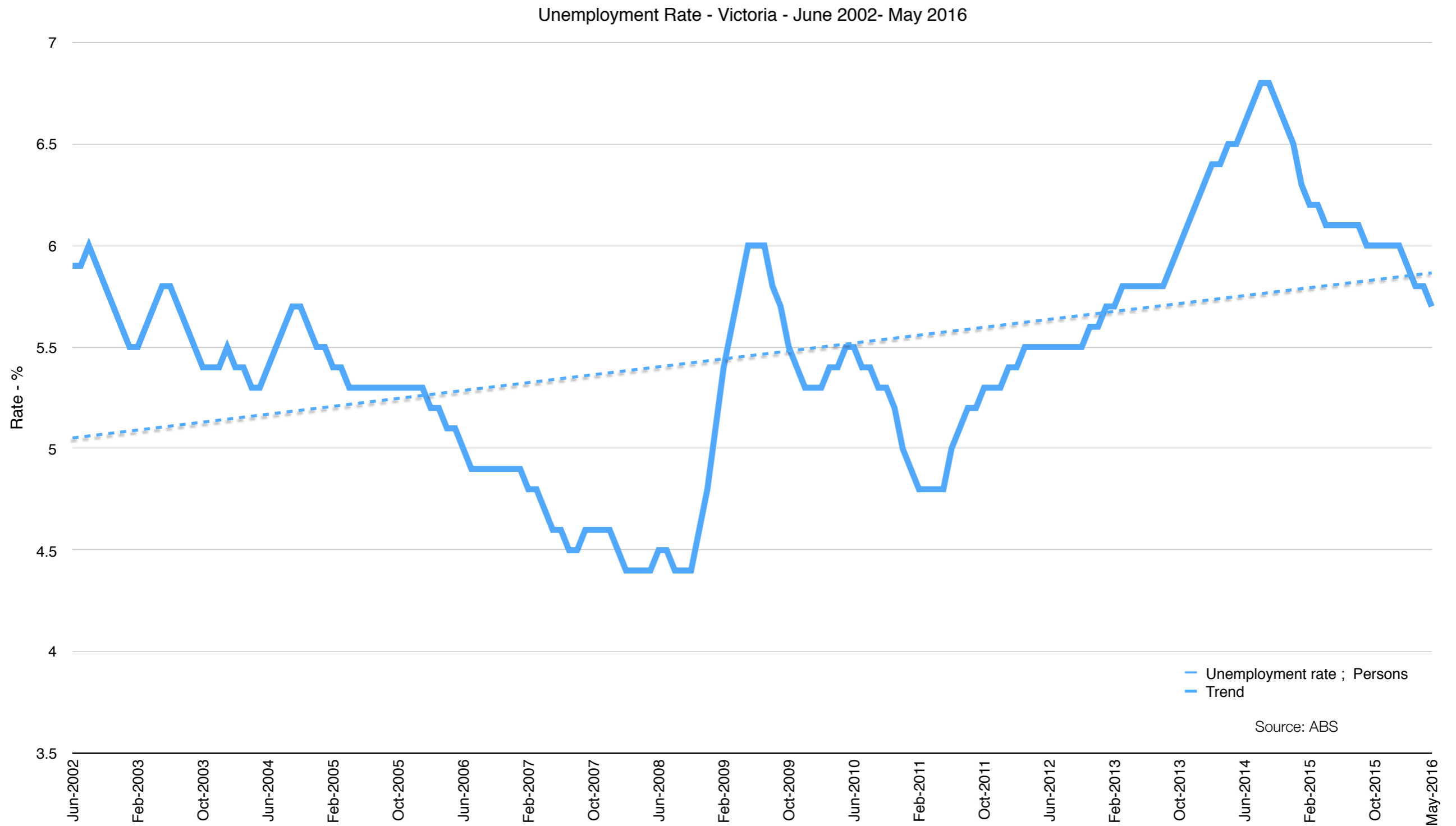
Source: ABS

# Youth Unemployment 15-24 - Since the "GFC"





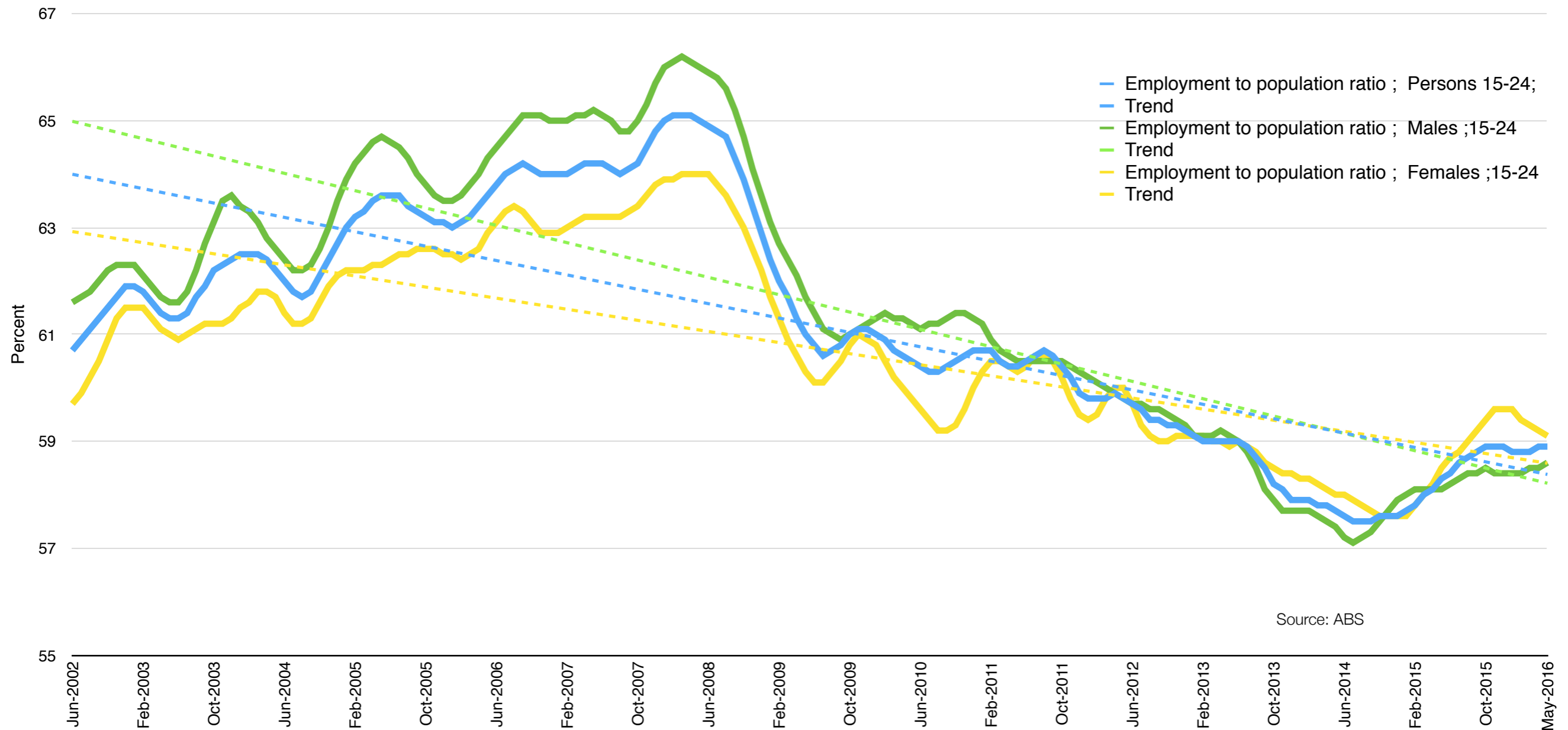
# Unemployment Victoria - May 2016



# Employment-to-Population Ratios - 2016

- Employment-to-population ratios for young people **collapsed** since the GFC - Early Improvement for Females appears to be falling away
- Some improvement since June 2014, apparent plates since October 2015.
- Decline for females since January 2016

Employment to Population Ratio - Males and Females - Australia - June 2002 - May 2016



Source: ABS

# WhaleSongServices

---



[www.whalesongservices.com.au](http://www.whalesongservices.com.au)



[bill@whalesongservices.com.au](mailto:bill@whalesongservices.com.au)



[@WhalesongAus](https://twitter.com/WhalesongAus)



[@billcoppinger](https://twitter.com/billcoppinger)



Arte non Vi