

Editorial

- There is ongoing disagreement on the veracity and appropriateness of the ABS Labour Force survey methodology amongst [some] analysts. [See 2.4.1]
- Wherever possible, I supply the **TREND** figures to avoid monthly “sensationalism”.
- **NOTE: Whilst debate of full & part-time jobs continues, an important metric is HOURS WORKED.**
- Hours worked has been falling every month.
- Monthly hours worked *in all jobs* **decreased** 4.3 million hours to 1,640.0 million hours.
- **Caution** with any *monthly* results is always advised.

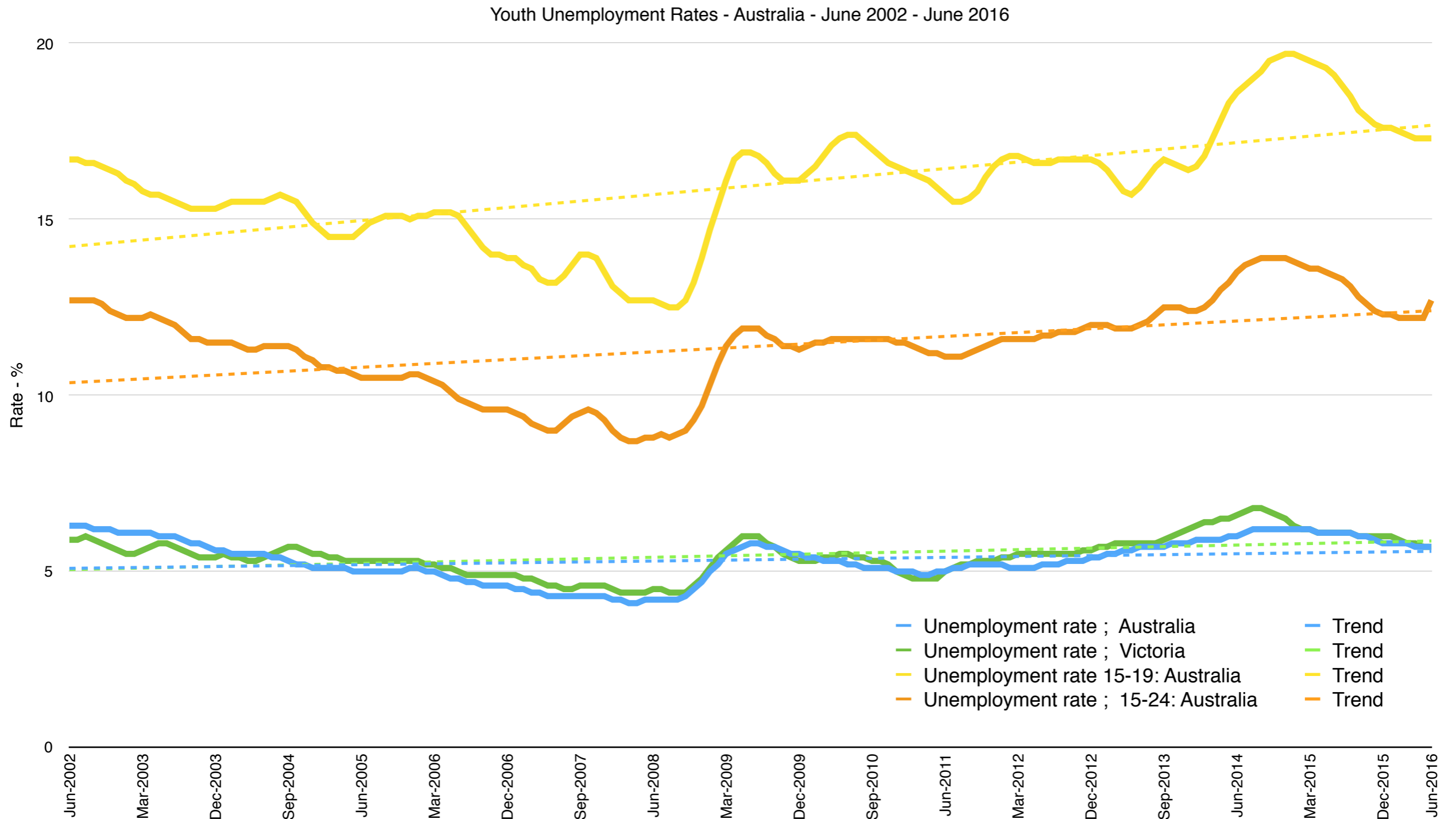
Bill Coppinger



June 2016: Labour Force Australia

- Australian unemployment rate **remained steady** at **5.7%**. Second month in a row [Trend]
- Employment **increased** by 8,300 [Trend]
- Unemployment **decreased** by 200 [Trend]
- **“More Jobs, Less hours” ???**: Monthly hours worked in all jobs **decreased by 4.3 million** hours to 1,640 million hours. Hours worked have **decreased by approximately 18 million hours** over the last 7 **months**. [Seasonally adjusted estimates]
- Australian participation rate **remained steady** at **64.8%**.
- Victorian unemployment rate **remained steady at 5.7%** [Trend]
- **Victoria** Trend employment growth strongest in Australia up **8,700** persons [3rd consecutive month]
- Australian Youth Unemployment 15-19 rate **remained** at **17.3%**
- Australian Youth Unemployment 15-24 rate **INCREASED to 12.7%**
- Australian 15-24 Employment to Population Ratio improved slightly to **59%**

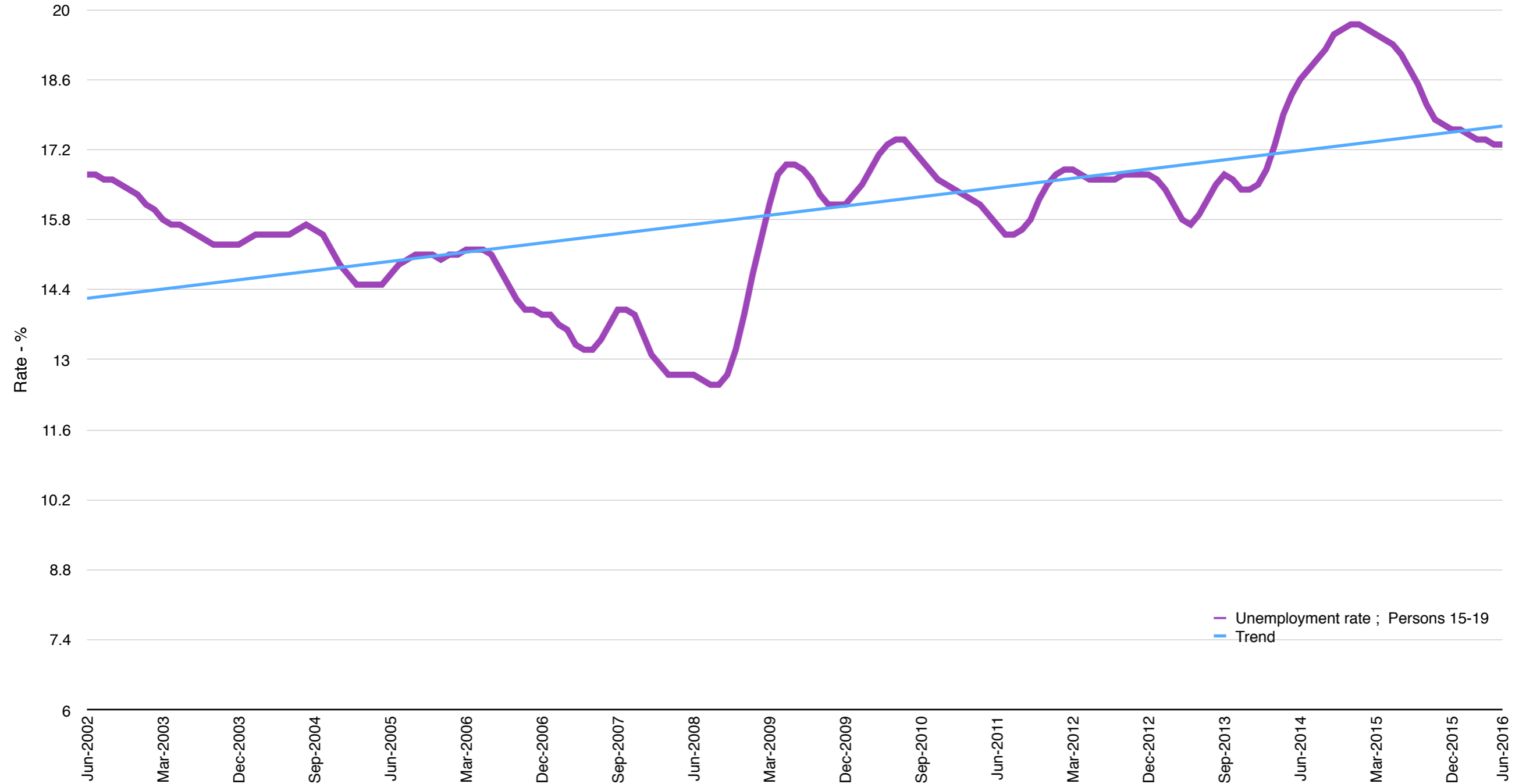
Youth Unemployment Australia - June 2016



Source: ABS

Youth Unemployment 15-19 - Australia June 2016

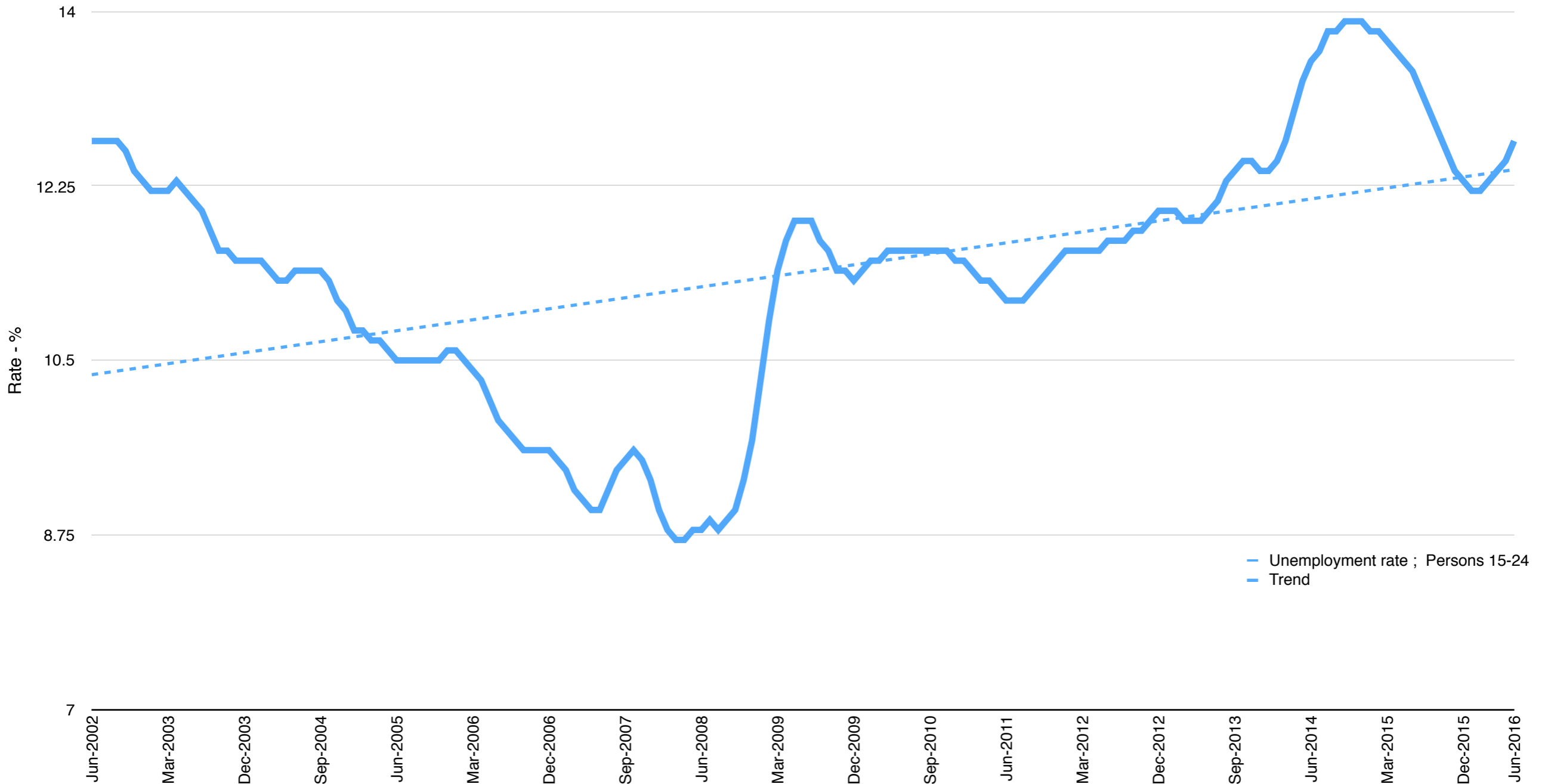
Unemployment Rate 15-19 Year Olds - Australia - June 2002 - June 2016



Source: ABS

Youth Unemployment 15-24 - Australia June 2016

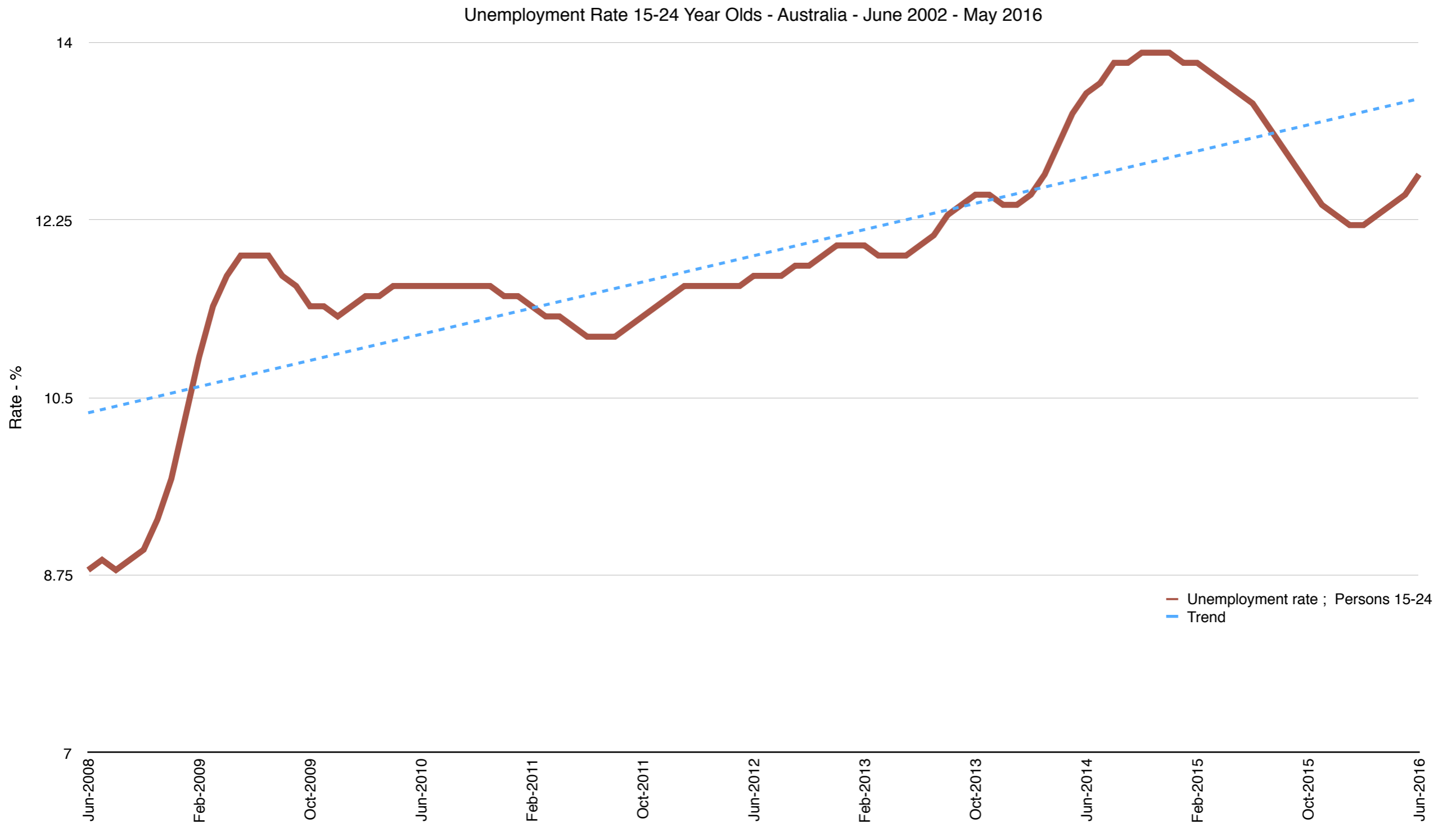
Unemployment Rate 15-24 Year Olds - Australia - June 2002 - June 2016



— Unemployment rate ; Persons 15-24
- - - Trend

Source: ABS

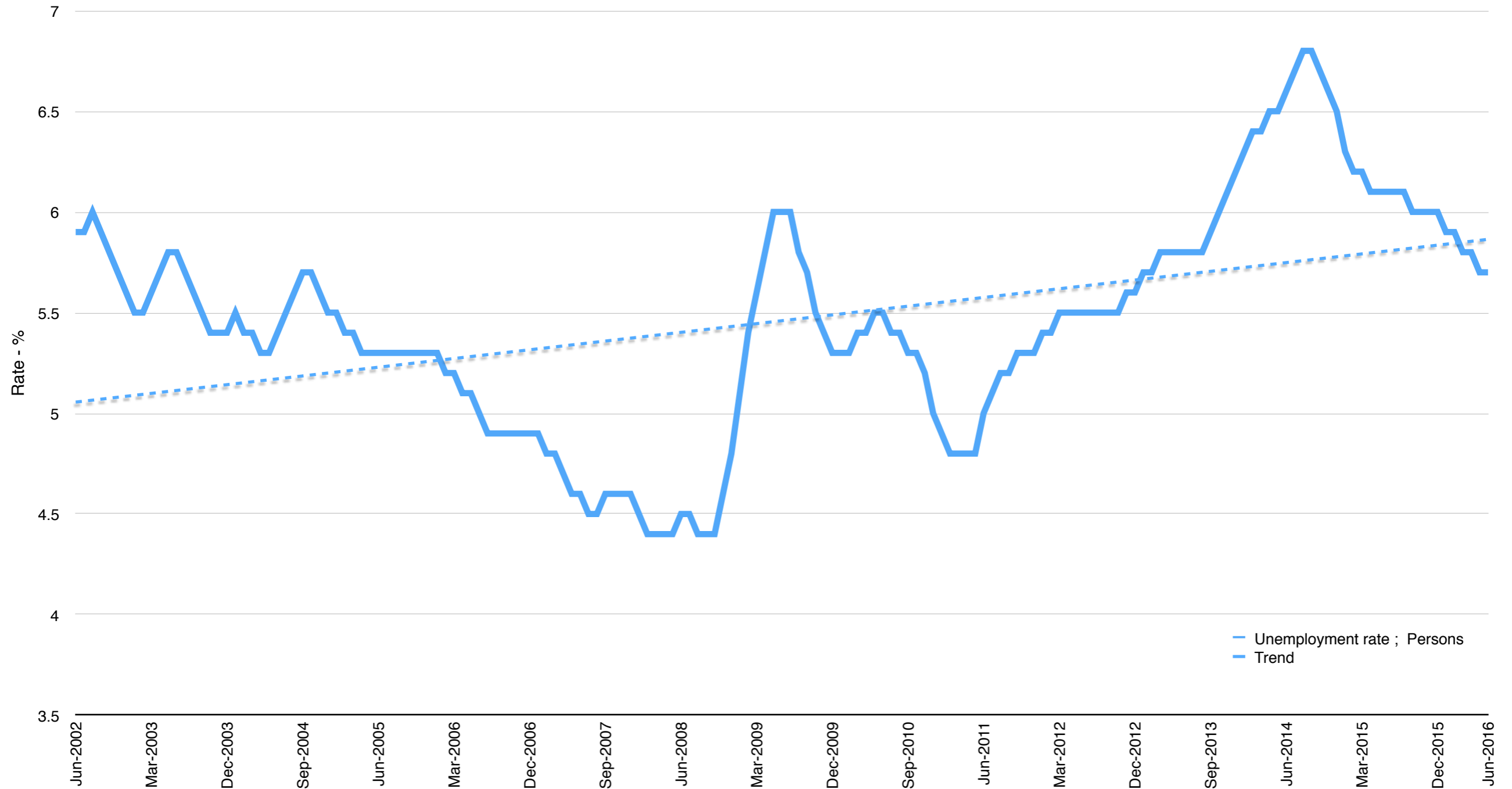
Youth Unemployment 15-24 - Since the "GFC"



Source: ABS

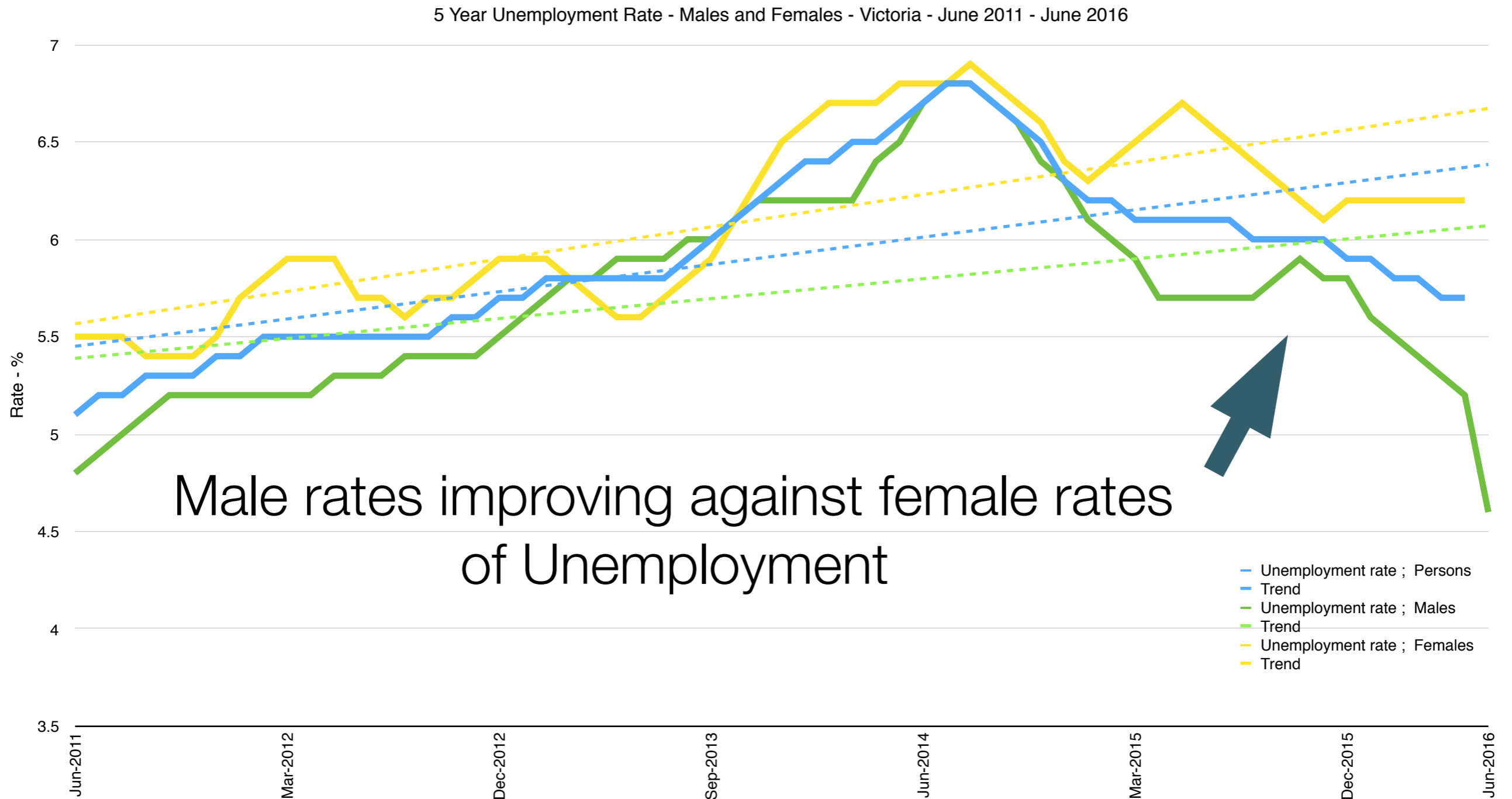
Unemployment Victoria - June 2016

Unemployment Rate - Victoria - June 2002- June 2016



Source: ABS

Victorian Unemployment 5 Year Trend 2011-2016



Male rates improving against female rates of Unemployment

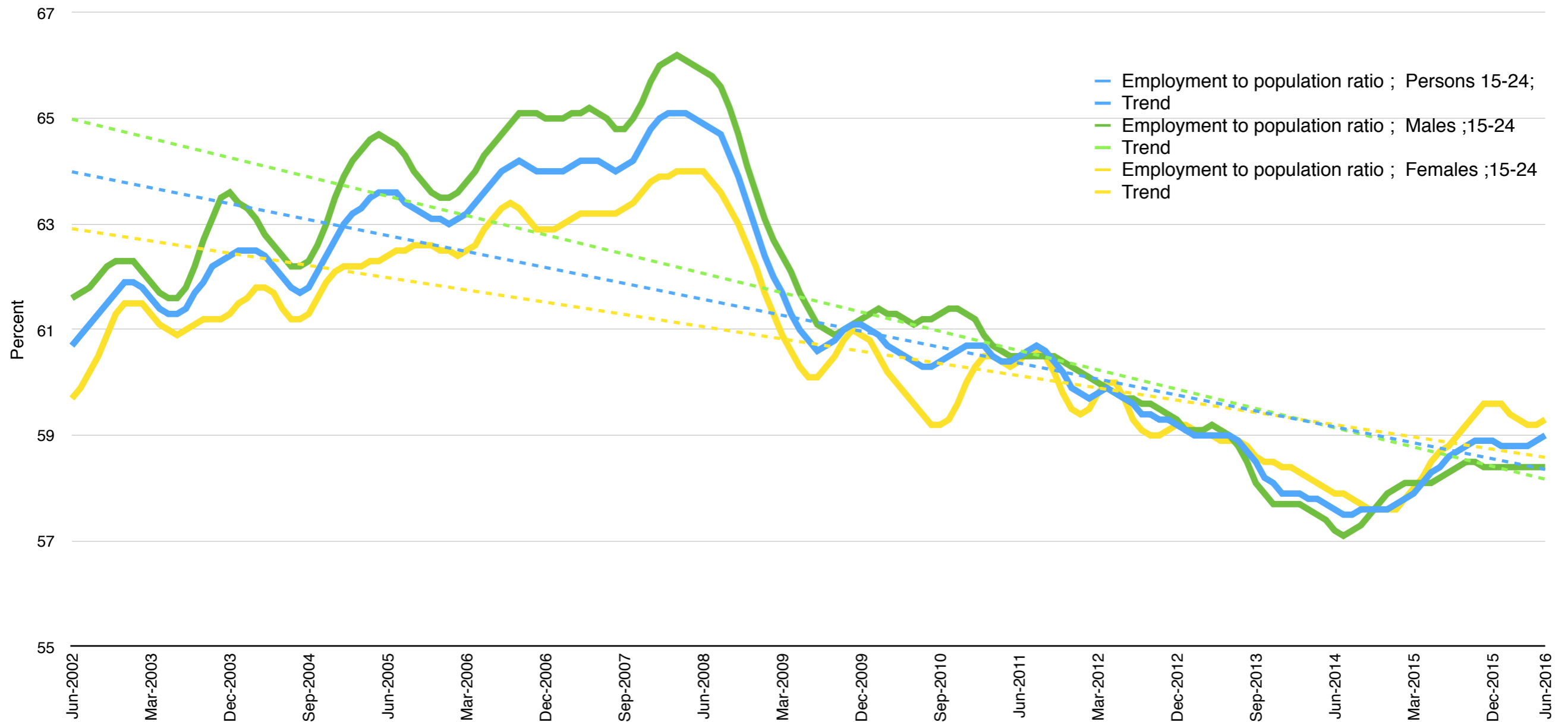
- Unemployment rate ; Persons
- Trend
- Unemployment rate ; Males
- Trend
- Unemployment rate ; Females
- Trend

Source: ABS

Employment-to-Population Ratios - 2016

- Employment-to-population ratios for young people **collapsed** since the GFC - Early Improvement for Females appears to be recovering
- Improvement since June 2014, apparent plateau since October 2015. Some recovery observed
- Male ratios have been stagnant since September 2015

Employment to Population Ratio - Males and Females - Australia - June 2002 - June 2016



Source: ABS

WhaleSongServices



www.whalesongservices.com.au



bill@whalesongservices.com.au



[@WhalesongAus](https://twitter.com/WhalesongAus)



[@billcoppinger](https://twitter.com/billcoppinger)



Arte non Vi