



Labour Force

February 2016

Editorial

- There is CONSIDERABLE disagreement on the veracity and appropriateness of the new ABS Labour Force survey methodology amongst analysts.
- Wherever possible, I supply the TREND figures, and will provide quarterly and yearly updates to avoid monthly “sensationalism”.
- **Caution** with any *monthly* results is always advised.

Bill Coppinger



January 2016: Labour Force Australia

- Australian unemployment rate **decreased** less than 0.1% to 5.8%. [Trend]
- Australian participation rate remained steady at 65.2%.
- Victorian unemployment rate **increased** 0.1% to 6.1% [Trend]
- Australian Youth Unemployment 15-19 rate **decreased** 0.1% to 17.6%
- Australian Youth Unemployment 15-24 rate **decreased** 0.2% to 12.2%
- The Australian Youth [15-19] unemployment rate is **lowest** since March 2014
- The Australian Youth [15-24] unemployment rate is **lowest** since July 2013
- **Warning:** Youth Employment-to-population ratios are **lowest** since mid 1990's

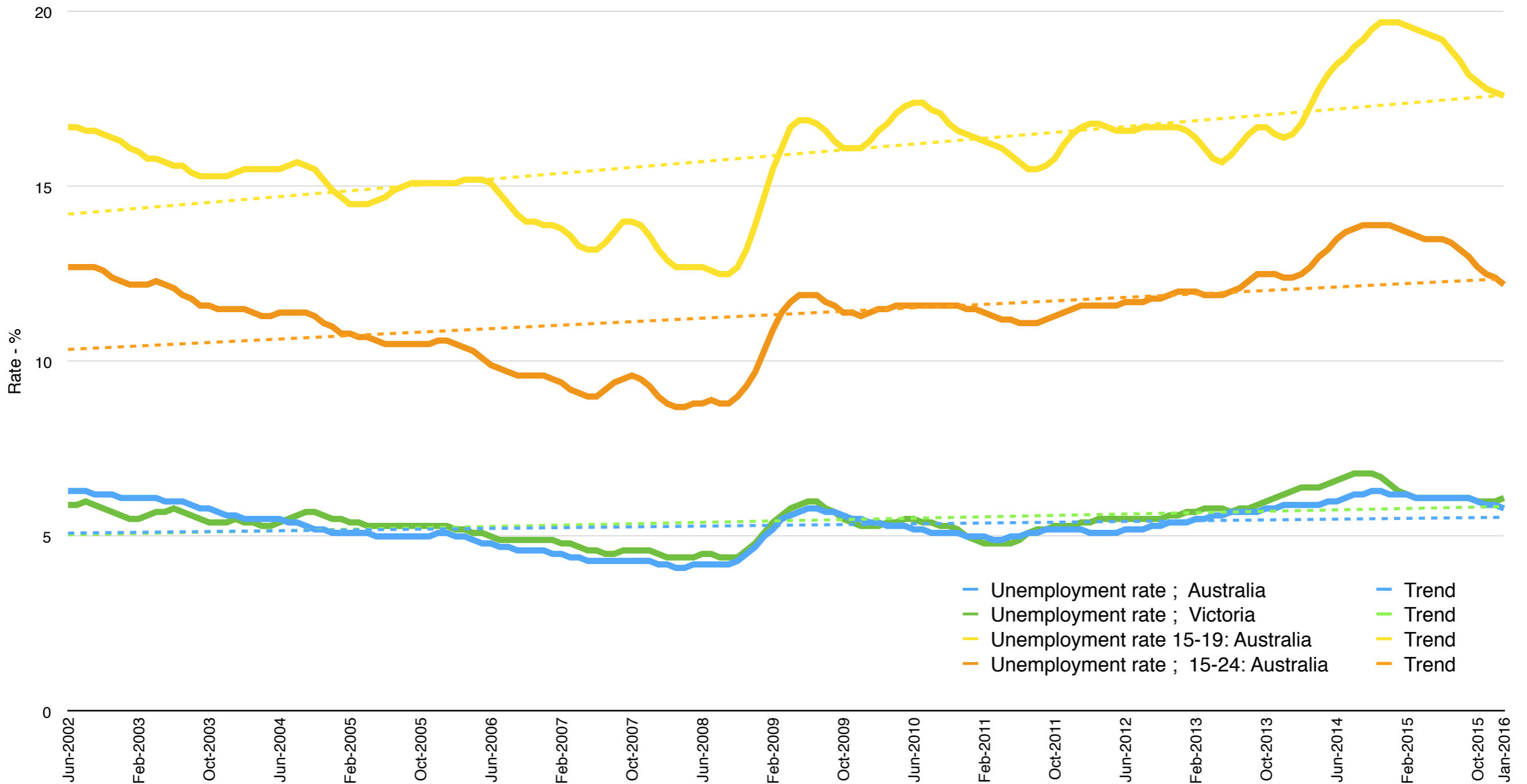
October 2015: Dissenting View - Roy Morgan

- Roy Morgan Research has a well documented [critical] critique of the ABS Labour Force series.
- According to **Roy Morgan**, In January 2016: **Real unemployment** in Australia is 10.3% (*up 0.5% in a month*)
- **ABS** Australian unemployment rate [TREND] is 5.8%.
- **1.346 million** Australians are looking for work: 10.3% of the workforce – up 20,000 since October 2014
- **an additional 1.229 million Australians (9.4%) under-employed** – working part-time and looking for more hours: 9.4% of the workforce
- Thus...**2.575 million** Australians (**19.7%**) now *unemployed or under-employed* – up a significant **309,000 (1.7%)** from a year ago.

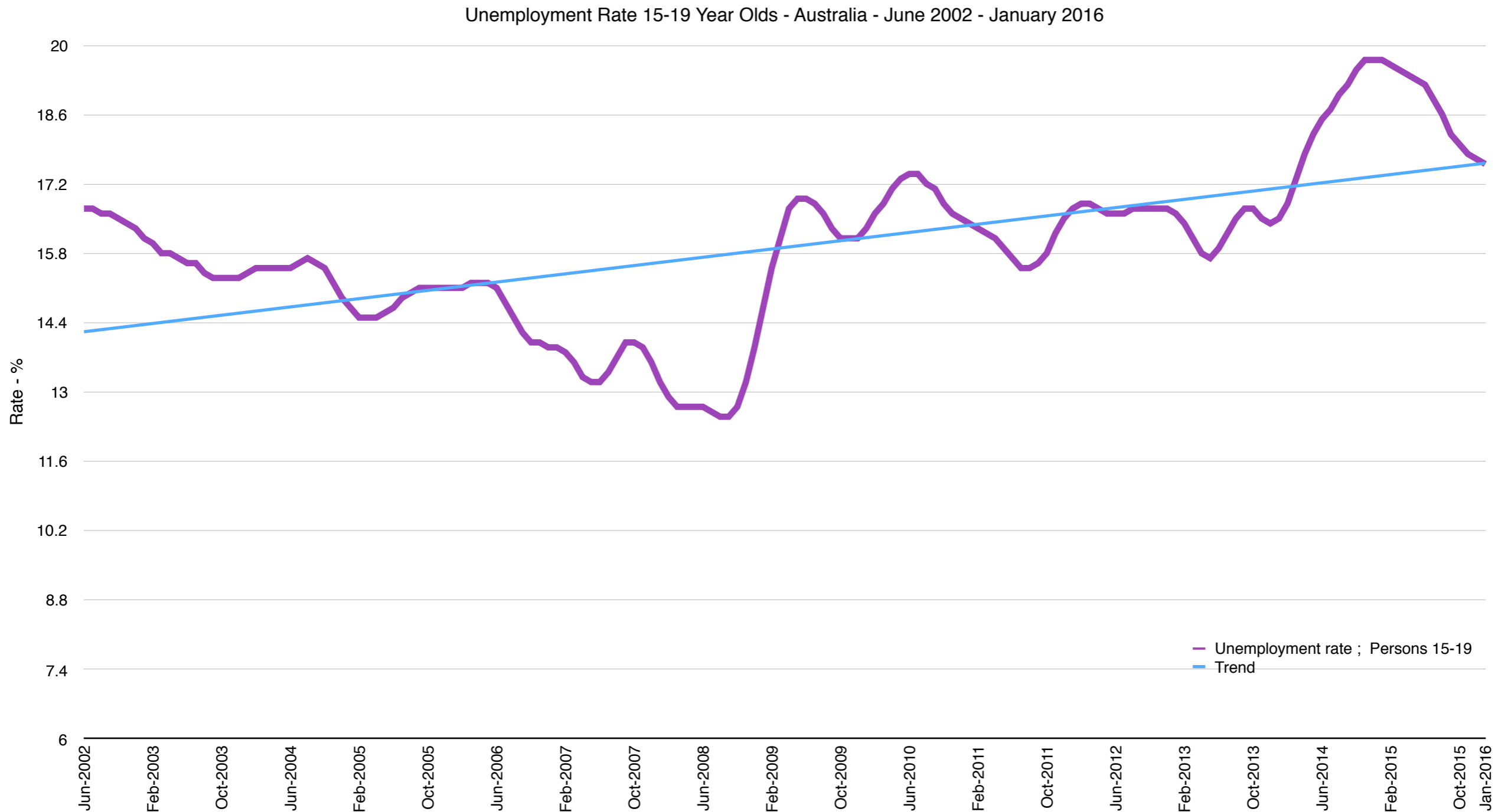
Source: Roy Morgan

Youth Unemployment Australia - January 2015

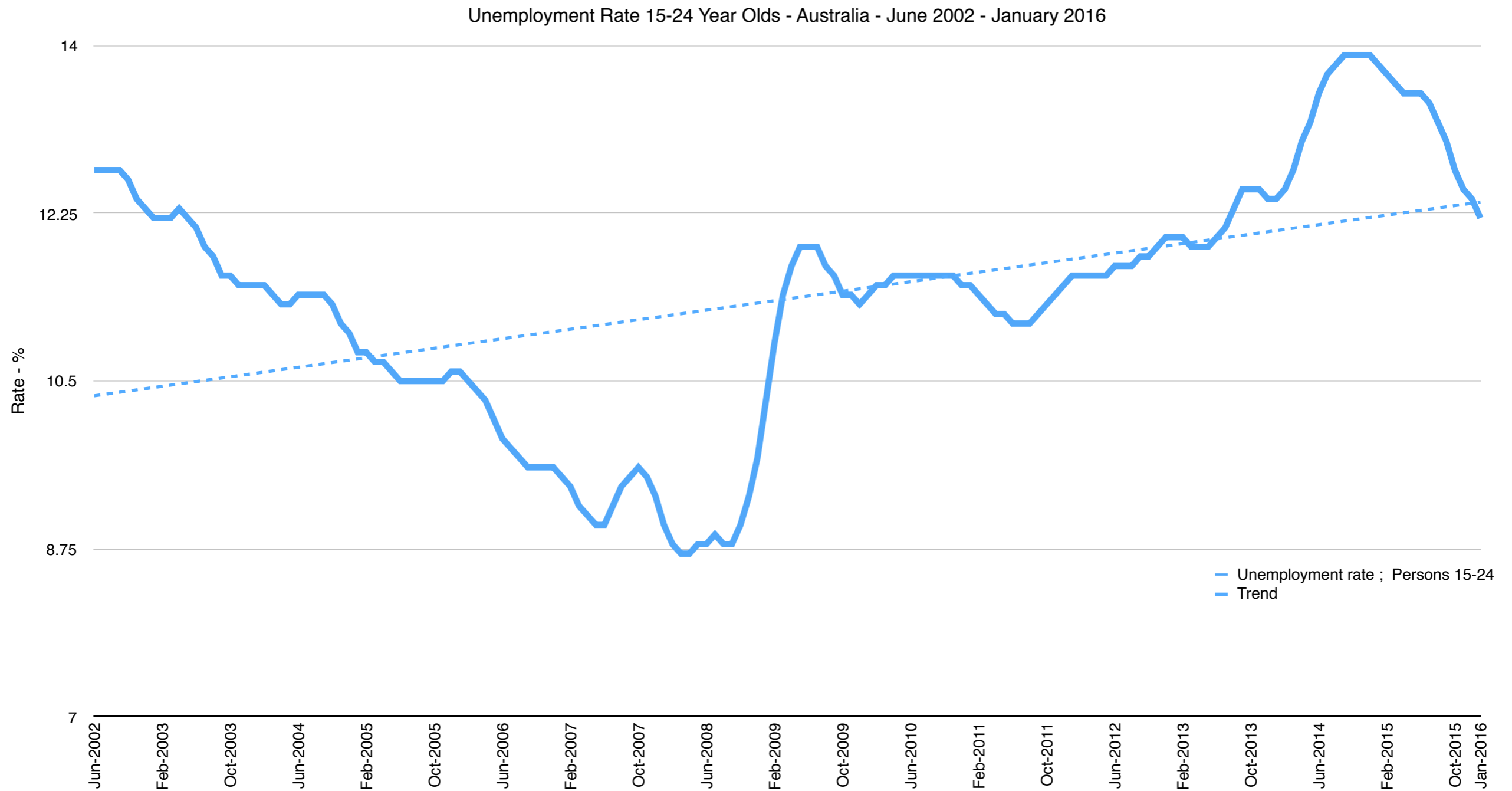
Youth Unemployment Rates - Australia - June 2002 - January 2016



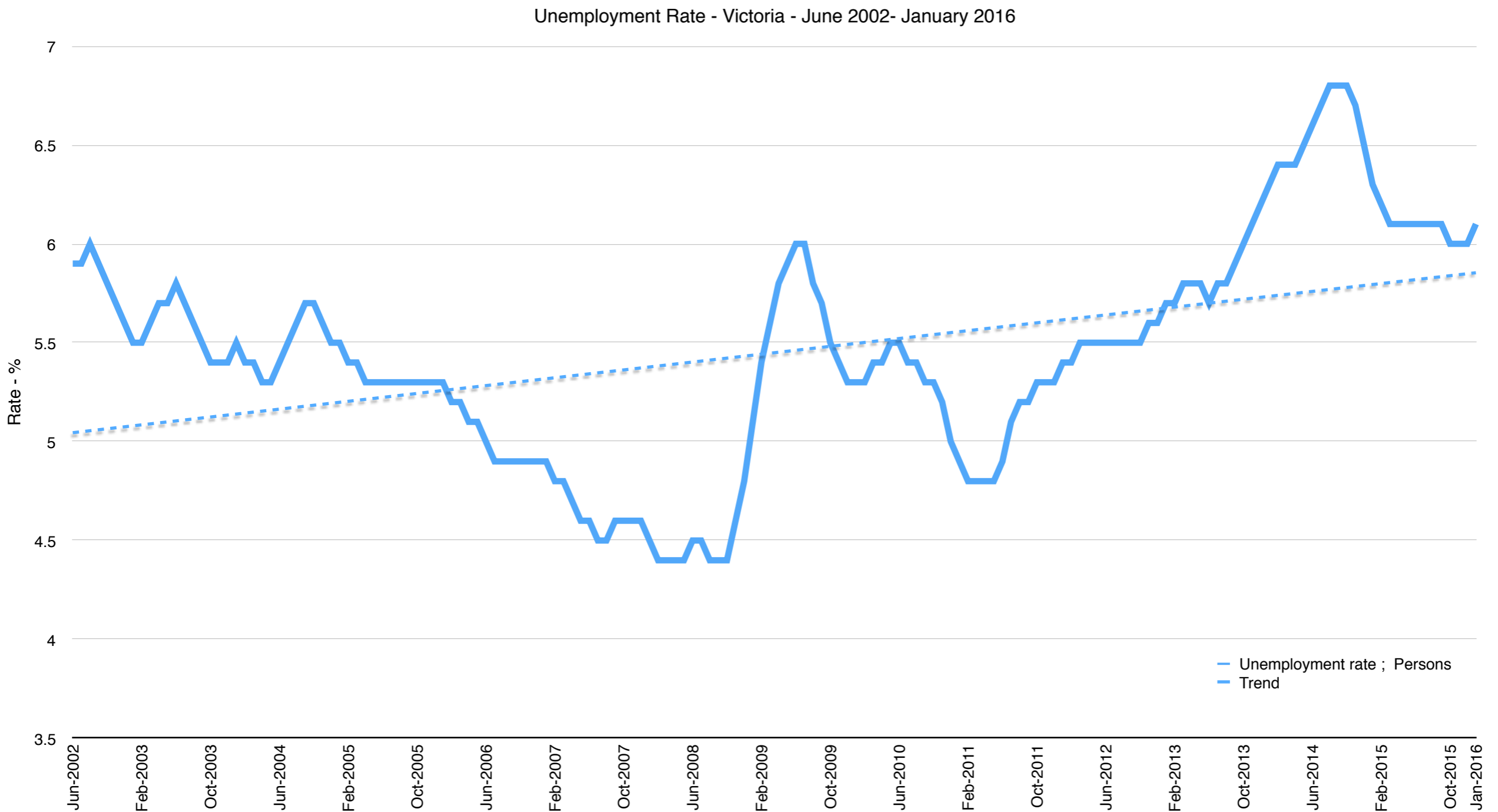
Youth Unemployment 15-19 - Australia 2016



Youth Unemployment 15-24 - Australia 2016



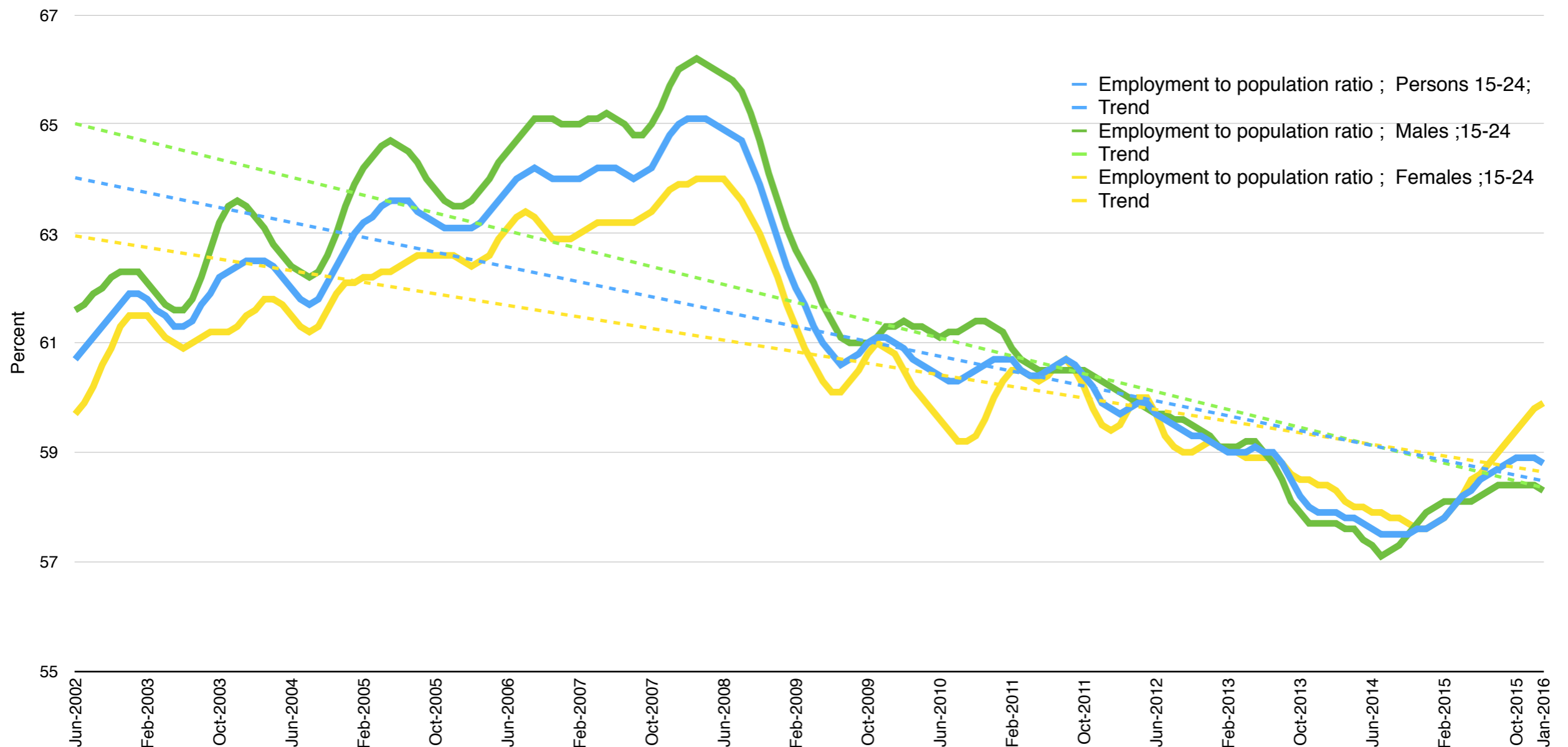
Unemployment Victoria - January 2016



Employment-to-Population Ratios - 2015

- Employment-to-population ratios for young people **collapsed** since the GFC - Some Improvement for Females
- 15-19 Year Old ratios are **abysmal**, Males 40.9% Females 48.4%
- 15-24 Year Olds, slightly better at approx 58.8%

Employment to Population Ratio - Males and Females - Australia - June 2002 - January 2016



WhaleSongServices



www.whalesongservices.com.au



bill@whalesongservices.com.au



[@WhalesongAus](https://twitter.com/WhalesongAus)



[@billcoppinger](https://twitter.com/billcoppinger)



Arte non Vi